

D

Worklist: 2028

<u>LAB CASE</u>	<u>ITEM</u>	<u>TASK ID</u>	<u>DESCRIPTION</u>	
M2017-3451	1	100293	AM 14 Blood Cannabinoids by	
M2017-3488	1	100294	AM 14 Blood Cannabinoids by	
M2017-3729	1	100296	AM 14 Blood Cannabinoids by	
M2017-3903	1	100297	AM 14 Blood Cannabinoids by	
P2017-1787	2	100298	AM 14 Blood Cannabinoids by	
P2017-1829	4	100328	AM 14 Blood Cannabinoids by	
P2017-1917	1	100310	AM 14 Blood Cannabinoids by	
P2017-1918	1	100314	AM 14 Blood Cannabinoids by	
P2017-1929	1	100318	AM 14 Blood Cannabinoids by	
P2017-1950	1	100321	AM 14 Blood Cannabinoids by	
P2017-1986	1	100322	AM 14 Blood Cannabinoids by	
P2017-2023	1	100323	AM 14 Blood Cannabinoids by	
P2017-2028	5	100326	AM 14 Blood Cannabinoids by	

Worklist Report

Worklist Path:	C:\MassHunter\ISP Methods\worklists\111417 BENZ and CANN SP and CS.wkl
Date Modified:	11/14/2017 03:52:06 PM
Date Printed:	11/16/2017 03:12:49 PM

Worklist Run Parameters

Operator Name:	62340
Run Type:	Standard Start
Part of Method to Run:	Acquisition Only
Execution for Acquisition-DA:	Synchronous
Acquisition Method Path:	C:\MassHunter\ISP Methods\Acquisition
DA Method Path:	D:\MassHunter\methods
Data File Path:	C:\MassHunter\Data\2017\Combined\111617 SP CS Benz and Cann Reinjects
Pre-Worklist Script:	---
Post-Worklist Script:	SCP_InstrumentStandby(){MH_Acq_Scripts.exe}
Acquisition Clean Up Script:	---
Overlapped Injection:	No
Clear sample selection after run:	Yes
Wait Time for Ready(Min):	10
Threshold Disk Value(GB):	10
Comment:	---

Plate Barcode Information

Plate	Barcode
P1	
P2	

Worklist Table

Sample Position	Sample Name	Method	Data File	Sample Type	Level Name	Comment	Info.
P1-A1	Blank	Benzos_Z_Drugs_ACN_FA_ISP_2017.m	BZ-BlankCS.d	Blank		AM 13 Benzo and Z by LCQQQ	Worklist 2024
P1-A1	Blank	Benzos_Z_Drugs_ACN_FA_ISP_2017.m	BZ-Blank1CS-r001.d	Blank		AM 13 Benzo and Z by LCQQQ	Worklist 2024
P1-A1	Blank	Benzos_Z_Drugs_ACN_FA_ISP_2017.m	BZ-Blank2CS-r001.d	Blank		AM 13 Benzo and Z by LCQQQ	Worklist 2024
P1-A2	10 ng/mL	Benzos_Z_Drugs_ACN_FA_ISP_2017.m	BZ-10 ng/mLCS-r001.d	Calibration	1	AM 13 Benzo and Z by LCQQQ	Worklist 2024
P1-A3	25 ng/mL	Benzos_Z_Drugs_ACN_FA_ISP_2017.m	BZ-25 ng/mLCS-r001.d	Calibration	2	AM 13 Benzo and Z by LCQQQ	Worklist 2024
P1-A4	50 ng/mL	Benzos_Z_Drugs_ACN_FA_ISP_2017.m	BZ-50 ng/mLCS-r001.d	Calibration	3	AM 13 Benzo and Z by LCQQQ	Worklist 2024
P1-A5	100 ng/mL	Benzos_Z_Drugs_ACN_FA_ISP_2017.m	BZ-100 ng/mLCS-r001.d	Calibration	4	AM 13 Benzo and Z by LCQQQ	Worklist 2024
P1-A6	500 ng/mL	Benzos_Z_Drugs_ACN_FA_ISP_2017.m	BZ-500 ng/mLCS-r001.d	Calibration	5	AM 13 Benzo and Z by LCQQQ	Worklist 2024

Sample Position	Sample Name	Method	Data File	Sample Type	Level Name	Comment	Info.
P1-A7	1000 ng/mL	Benzos_Z_Drugs_ACN_FA_ISP_2017.m	BZ-1000 ngmLCS_r001.d	Calibration	6	AM 13 Benzo and Z by LCQQQ	Worklist 2024
P1-A8	3000 ng/mL	Benzos_Z_Drugs_ACN_FA_ISP_2017.m	BZ-3000 ngmLCS_r001.d	Calibration	7	AM 13 Benzo and Z by LCQQQ	Worklist 2024
P1-A1	Blank	Benzos_Z_Drugs_ACN_FA_ISP_2017.m	BZ-Carryover blank1CS_r001.d	Blank		AM 13 Benzo and Z by LCQQQ	Worklist 2024
P1-A9	Positive Glucuronide Control	Benzos_Z_Drugs_ACN_FA_ISP_2017.m	BZ-PCGluc-CS_r001.d	Sample		AM 13 Benzo and Z by LCQQQ	300 ng/mL Alltech lot 715-5035 in neg lot POC112116; Worklist 2024
P1-B1	Negative Glucuronide Control	Benzos_Z_Drugs_ACN_FA_ISP_2017.m	BZ-NC Gluc-CS-r001.d	Sample		AM 13 Benzo and Z by LCQQQ	300 ng/mL Alltech lot 715-5035 in neg lot POC112116; Worklist 2024
P1-B2	Positive Control	Benzos_Z_Drugs_ACN_FA_ISP_2017.m	BZ-PC-CS_r001.d	Sample		AM 13 Benzo and Z by LCQQQ	300 ng/mL Benzodiazepines Mix Cerilliant lot FE012413-02 in neg LOT POC041212; Worklist 2024
P1-B3	Negative Control	Benzos_Z_Drugs_ACN_FA_ISP_2017.m	BZ-NC-CS-r001.d	Sample		AM 13 Benzo and Z by LCQQQ	Negative Urine lot POC112116; Worklist 2024
P1-A1	Blank	Benzos_Z_Drugs_ACN_FA_ISP_2017.m	BZ-Carryover blank-CS_r001.d	Blank		AM 13 Benzo and Z by LCQQQ	Worklist 2024
P1-B4	M2017-4733-1	Benzos_Z_Drugs_ACN_FA_ISP_2017.m	BZ-M2017-4733-1.d	Sample		AM 13 Benzo and Z by LCQQQ	Worklist 2024
P1-B5	M2017-4840-3	Benzos_Z_Drugs_ACN_FA_ISP_2017.m	BZ-M2017-4840-3.d	Sample		AM 13 Benzo and Z by LCQQQ	Worklist 2024
P1-B6	M2017-4841-3	Benzos_Z_Drugs_ACN_FA_ISP_2017.m	BZ-M2017-4841-3.d	Sample		AM 13 Benzo and Z by LCQQQ	Worklist 2024
P1-B7	M2017-5089-4	Benzos_Z_Drugs_ACN_FA_ISP_2017.m	BZ-M2017-5089-4.d	Sample		AM 13 Benzo and Z by LCQQQ	Worklist 2024
P1-B8	P2017-2426-1	Benzos_Z_Drugs_ACN_FA_ISP_2017.m	BZ-P2017-2426-1.d	Sample		AM 13 Benzo and Z by LCQQQ	Worklist 2024
P1-B9	P2017-2426-2	Benzos_Z_Drugs_ACN_FA_ISP_2017.m	BZ-P2017-2426-2.d	Sample		AM 13 Benzo and Z by LCQQQ	Worklist 2024
P1-C1	P2017-2426-3	Benzos_Z_Drugs_ACN_FA_ISP_2017.m	BZ-P2017-2426-3.d	Sample		AM 13 Benzo and Z by LCQQQ	Worklist 2024
P1-C2	P2017-2464-1	Benzos_Z_Drugs_ACN_FA_ISP_2017.m	BZ-P2017-2464-1.d	Sample		AM 13 Benzo and Z by LCQQQ	Worklist 2024
P1-C3	P2017-2476-1	Benzos_Z_Drugs_ACN_FA_ISP_2017.m	BZ-P2017-2476-1.d	Sample		AM 13 Benzo and Z by LCQQQ	Worklist 2024
P1-C4	P2017-2486-2	Benzos_Z_Drugs_ACN_FA_ISP_2017.m	BZ-P2017-2486-2.d	Sample		AM 13 Benzo and Z by LCQQQ	Worklist 2024

Sample Position	Sample Name	Method	Data File	Sample Type	Level Name	Comment	Info.
P1-C5	P2017-2510-1	Benzos_Z_Drugs_ACN_FA_ISP_2017.m	BZ-P2017-2510-1.d	Sample		AM 13 Benzo and Z by LCQQQ	Worklist 2024
P1-C6	P2017-2577-1	Benzos_Z_Drugs_ACN_FA_ISP_2017.m	BZ-P2017-2577-1.d	Sample		AM 13 Benzo and Z by LCQQQ	Worklist 2024
P1-A1	Blank	Benzos_Z_Drugs_ACN_FA_ISP_2017.m	BZ-end of run blankCS.d	Blank		AM 13 Benzo and Z by LCQQQ	Worklist 2024
P1-D1	Blank	Benzos_Z_Drugs_ACN_FA_ISP_2017.m	BZ-BlankSP.d	Blank		AM 13 Benzo and Z by LCQQQ	Blood
P1-D1	Blank	Benzos_Z_Drugs_ACN_FA_ISP_2017.m	BZ-Blank1SP-r001.d	Blank		AM 13 Benzo and Z by LCQQQ	Blood
P1-D1	Blank	Benzos_Z_Drugs_ACN_FA_ISP_2017.m	BZ-Blank2SP-r001.d	Blank		AM 13 Benzo and Z by LCQQQ	Blood
P1-D2	10 ngmL	Benzos_Z_Drugs_ACN_FA_ISP_2017.m	BZ-10 ngmLSP-r001.d	Calibration	1	AM 13 Benzo and Z by LCQQQ	
P1-D3	25 ngmL	Benzos_Z_Drugs_ACN_FA_ISP_2017.m	BZ-25 ngmLSP_r001.d	Calibration	2	AM 13 Benzo and Z by LCQQQ	
P1-D4	50 ngmL	Benzos_Z_Drugs_ACN_FA_ISP_2017.m	BZ-50 ngmLSP_r001.d	Calibration	3	AM 13 Benzo and Z by LCQQQ	
P1-D5	100 ngmL	Benzos_Z_Drugs_ACN_FA_ISP_2017.m	BZ-100 ngmLSP_r001.d	Calibration	4	AM 13 Benzo and Z by LCQQQ	
P1-D6	500 ngmL	Benzos_Z_Drugs_ACN_FA_ISP_2017.m	BZ-500 ngmLSP_r001.d	Calibration	5	AM 13 Benzo and Z by LCQQQ	
P1-D7	1000 ngmL	Benzos_Z_Drugs_ACN_FA_ISP_2017.m	BZ-1000 ngmLSP_r001.d	Calibration	6	AM 13 Benzo and Z by LCQQQ	
P1-D1	Blank	Benzos_Z_Drugs_ACN_FA_ISP_2017.m	BZ-Carryover blank1SP_r001.d	Blank		AM 13 Benzo and Z by LCQQQ	
P1-D8	Negative Blood Control	Benzos_Z_Drugs_ACN_FA_ISP_2017.m	BZ-NC-B_r001.d	Sample		AM 13 Benzo and Z by LCQQQ	Hemostate Negative Sheep Blood LOT 361331-3
P1-D9	Positive Blood Control	Benzos_Z_Drugs_ACN_FA_ISP_2017.m	BZ-PC-B-r001.d	Sample		AM 13 Benzo and Z by LCQQQ	Benzodiazepines Mix Cerilliant lot FE04221402 in Hemostate Sheep Blood Lot 361331-3
P1-D1	Blank	Benzos_Z_Drugs_ACN_FA_ISP_2017.m	BZ-Carryover blank-SP_r001.d	Blank		AM 13 Benzo and Z by LCQQQ	
P1-E1	M2017-3728-1	Benzos_Z_Drugs_ACN_FA_ISP_2017.m	BZ-M2017-3728-1.d	Sample		AM 13 Benzo and Z by LCQQQ	Blood
P1-E2	P2017-1918-1	Benzos_Z_Drugs_ACN_FA_ISP_2017.m	BZ-P2017-1918-1.d	Sample		AM 13 Benzo and Z by LCQQQ	Blood
P1-D1	Blank	Benzos_Z_Drugs_ACN_FA_ISP_2017.m	BZ-end of run blank.d	Blank		AM 13 Benzo and Z by LCQQQ	
P2-A1	Blank	isp blood cannabinoids Poky 2016-3.m		Blank			

Sample Position	Sample Name	Method	Data File	Sample Type	Level Name	Comment	Info.
			MJ-Blank1-r001.d			AM 14 Cannabinoids by LCQQQ	
P2-A1	Blank	isp blood cannabinoids Poky 2016-3.m	MJ-Blank2-r001.d	Blank		AM 14 Cannabinoids by LCQQQ	
P2-A2	Blood: 1_5 ng/mL	isp blood cannabinoids Poky 2016-3.m	MJ-CAL1-r001.d	Calibration	1	AM 14 Cannabinoids by LCQQQ	c-THC @5ng/mL, all others @1 ng/mL
P2-A3	Blood: 2_10 ng/mL	isp blood cannabinoids Poky 2016-3.m	MJ-CAL2_r001.d	Calibration	2	AM 14 Cannabinoids by LCQQQ	c-THC @10ng/mL, all others @2 ng/mL
P2-A4	Blood: 5_25 ng/mL	isp blood cannabinoids Poky 2016-3.m	MJ-CAL3_r001.d	Calibration	3	AM 14 Cannabinoids by LCQQQ	c-THC @25ng/mL, all others @5 ng/mL
P2-A5	Blood: 10_50 ng/mL	isp blood cannabinoids Poky 2016-3.m	MJ-CAL4_r001.d	Calibration	4	AM 14 Cannabinoids by LCQQQ	c-THC @50ng/mL, all others @10 ng/mL
P2-A6	Blood: 25_125 ng/mL	isp blood cannabinoids Poky 2016-3.m	MJ-CAL5_r001.d	Calibration	5	AM 14 Cannabinoids by LCQQQ	c-THC @125ng/mL, all others @25 ng/mL
P2-A7	Blood: 50_250 ng/mL	isp blood cannabinoids Poky 2016-3.m	MJ-CAL6_r001.d	Calibration	6	AM 14 Cannabinoids by LCQQQ	c-THC @250ng/mL, all others @50 ng/mL
P2-A1	Blank	isp blood cannabinoids Poky 2016-3.m	MJ-Carryover blank1_r001.d	Blank		AM 14 Cannabinoids by LCQQQ	
P2-A9	Blood Negative Control	isp blood cannabinoids Poky 2016-3.m	MJ-NC-r001.d	Sample		AM 14 Cannabinoids by LCQQQ	Hemostate Negative Sheep Blood LOT 361331-3
P2-B1	PC1	isp blood cannabinoids Poky 2016-3.m	MJ-POS Ctrl 1-r001.d	Sample		AM 14 Cannabinoids by LCQQQ	Hemostate Sheep Blood LOT 361331-3 + WS050917
P2-A1	Blank	isp blood cannabinoids Poky 2016-3.m	MJ-Blank 3_r001.d	Blank		AM 14 Cannabinoids by LCQQQ	
P2-B2	M2017-3451-1	isp blood cannabinoids Poky 2016-3.m	M2017-3451-1.d	Sample		AM 14 Cannabinoids by LCQQQ	Blood
P2-B3	M2017-3488-1	isp blood cannabinoids Poky 2016-3.m	M2017-3488-1.d	Sample		AM 14 Cannabinoids by LCQQQ	Blood
P2-B4	M2017-3729-1	isp blood cannabinoids Poky 2016-3.m	M2017-3729-1.d	Sample		AM 14 Cannabinoids by LCQQQ	Blood
P2-B5	M2017-3903-1	isp blood cannabinoids Poky 2016-3.m	M2017-3903-1.d	Sample		AM 14 Cannabinoids by LCQQQ	Blood
P2-B6	P2017-1787-2	isp blood cannabinoids Poky 2016-3.m	P2017-1787-2.d	Sample		AM 14 Cannabinoids by LCQQQ	Blood
P2-B7	P2017-1829-4	isp blood cannabinoids Poky 2016-3.m	P2017-1829-4.d	Sample		AM 14 Cannabinoids by LCQQQ	Blood

Sample Position	Sample Name	Method	Data File	Sample Type	Level Name	Comment	Info.
P2-B8	PC2	isp blood cannabinoids Poky 2016-3.m	MJ-POS Ctrl 2-r001.d	Sample		AM 14 Cannabinoids by LCQQQ	Hemostate Sheep Blood LOT 361331-3 + WS050917
P2-B9	P2017-1917-1	isp blood cannabinoids Poky 2016-3.m	P2017-1917-1.d	Sample		AM 14 Cannabinoids by LCQQQ	Blood
P2-C1	P2017-1918-1	isp blood cannabinoids Poky 2016-3.m	P2017-1918-1.d	Sample		AM 14 Cannabinoids by LCQQQ	Blood
P2-C2	P2017-1929-1	isp blood cannabinoids Poky 2016-3.m	P2017-1929-1.d	Sample		AM 14 Cannabinoids by LCQQQ	Blood
P2-C3	P2017-1950-1	isp blood cannabinoids Poky 2016-3.m	P2017-1950-1.d	Sample		AM 14 Cannabinoids by LCQQQ	Blood
P2-C4	P2017-1986-1	isp blood cannabinoids Poky 2016-3.m	P2017-1986-1.d	Sample		AM 14 Cannabinoids by LCQQQ	Blood
P2-C5	P2017-2023-1	isp blood cannabinoids Poky 2016-3.m	P2017-2023-1.d	Sample		AM 14 Cannabinoids by LCQQQ	Blood
P2-C6	P2017-2028-5	isp blood cannabinoids Poky 2016-3.m	P2017-2028-5.d	Sample		AM 14 Cannabinoids by LCQQQ	Blood
P2-A1	Blank	isp blood cannabinoids Poky 2016-3.m	MJ-Blank4-r001.d	Blank		AM 14 Cannabinoids by LCQQQ	

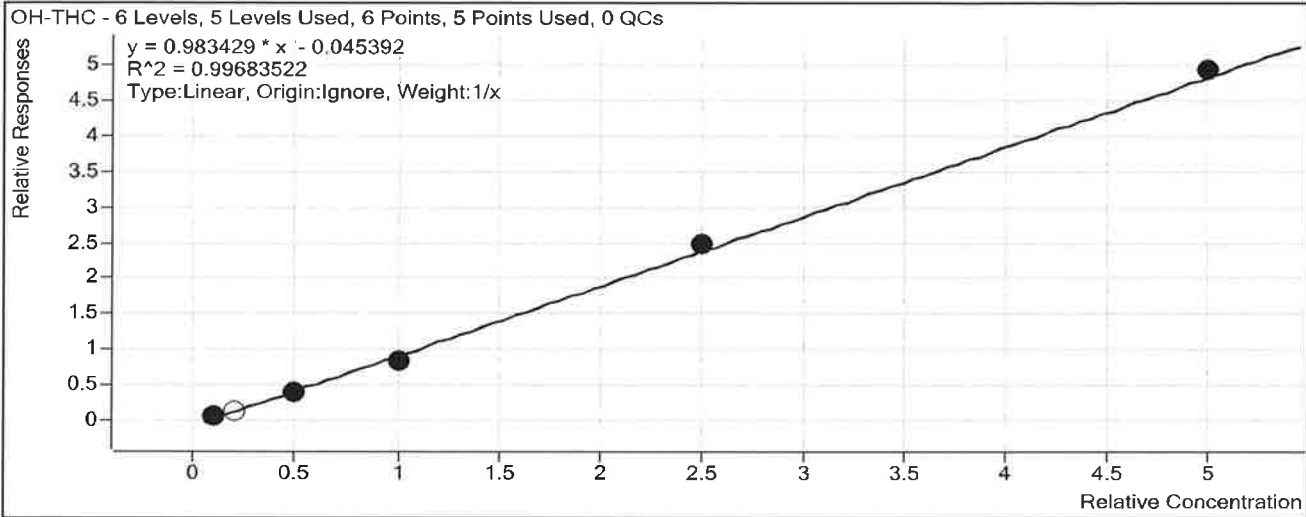
ISP FORENSICS

Calibration Curve Report

D

Batch Data Path C:\MassHunter\Data\2017\Combined\111617 SP CS Benz and Cann
 Reinjects\QuantResults\111617 CANN SP.batch.bin
Last Calib Update 11/17/2017 9:54 AM **Analyst Name** ISP TOX

Target Compound OH-THC
Internal Standard OH-THC-d3



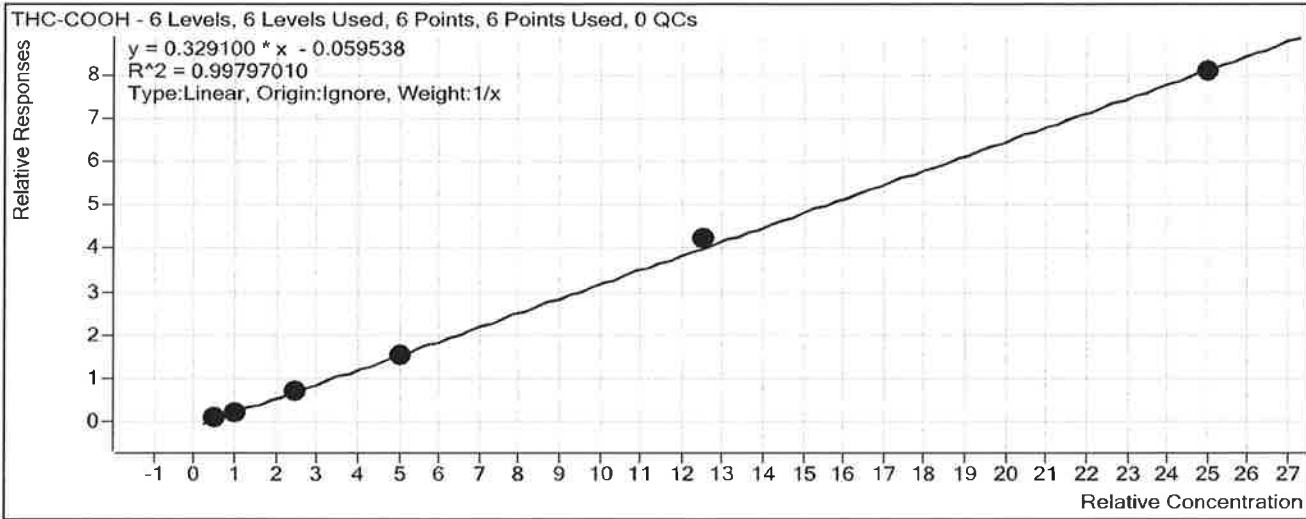
Sample	Level	Enabled	Exp Conc	Final Conc	Accuracy
Blood: 1_5 ng/mL	1	<input checked="" type="checkbox"/>	1	1.2	117.2
Blood: 2_10 ng/mL	2	<input type="checkbox"/>	2	1.7	84.3
Blood: 5_25 ng/mL	3	<input checked="" type="checkbox"/>	5	4.4	88.6
Blood: 10_50 ng/mL	4	<input checked="" type="checkbox"/>	10	9.0	89.8
Blood: 25_125 ng/mL	5	<input checked="" type="checkbox"/>	25	25.8	103.1
Blood: 50_250 ng/mL	6	<input checked="" type="checkbox"/>	50	50.6	101.3

ISP FORENSICS Calibration Curve Report

D

Batch Data Path C:\MassHunter\Data\2017\Combined\111617 SP CS Benz and Cann
Reinjects\QuantResults\111617 CANN SP.batch.bin
Last Calib Update 11/17/2017 9:54 AM **Analyst Name** ISP TOX

Target Compound *THC-COOH*
Internal Standard *THC-COOH-d3*



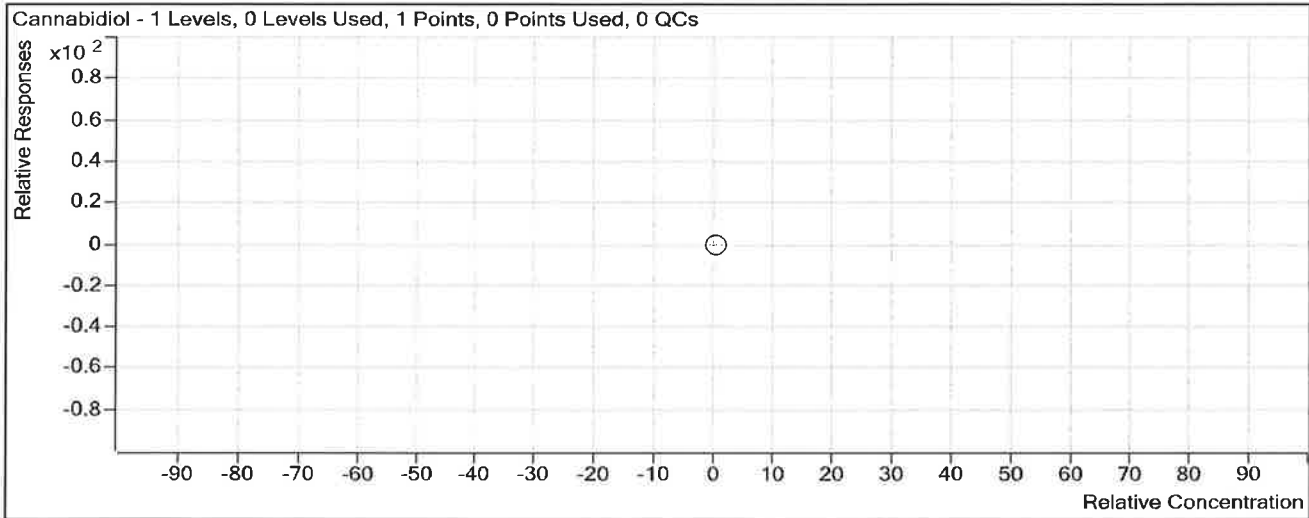
Sample	Level	Enabled	Exp Conc	Final Conc	Accuracy
Blood: 1_5 ng/mL	1	<input checked="" type="checkbox"/>	5	5.8	115.8
Blood: 2_10 ng/mL	2	<input checked="" type="checkbox"/>	10	9.1	90.7
Blood: 5_25 ng/mL	3	<input checked="" type="checkbox"/>	25	23.2	93.0
Blood: 10_50 ng/mL	4	<input checked="" type="checkbox"/>	50	48.2	96.5
Blood: 25_125 ng/mL	5	<input checked="" type="checkbox"/>	125	131.4	105.1
Blood: 50_250 ng/mL	6	<input checked="" type="checkbox"/>	250	247.3	98.9

ISP FORENSICS Calibration Curve Report

AS

Batch Data Path C:\MassHunter\Data\2017\Combined\111617 SP CS Benz and Cann
Reinjects\QuantResults\111617 CANN SP.batch.bin
Last Calib Update 11/17/2017 9:54 AM **Analyst Name** ISP TOX

Target Compound *Cannabidiol*
Internal Standard *Cannabidiol-d3*



Sample	Level	Enabled	Exp Conc	Final Conc	Accuracy
Blood: 1_5 ng/mL	1	<input type="checkbox"/>	1	0.0	0.0

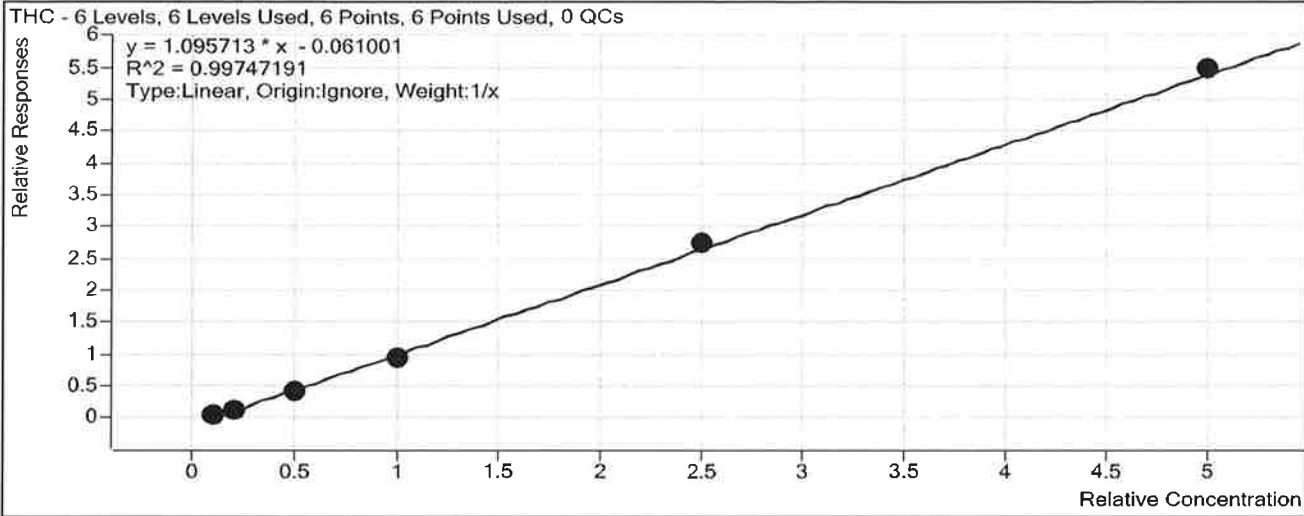
Cannabidiol was not evaluated.

ISP FORENSICS Calibration Curve Report

D

Batch Data Path C:\MassHunter\Data\2017\Combined\111617 SP CS Benz and Cann
 Reinjects\QuantResults\111617 CANN SP.batch.bin
Last Calib Update 11/17/2017 9:54 AM **Analyst Name** ISP TOX

Target Compound *THC*
Internal Standard *THC-d3*



Sample	Level	Enabled	Exp Conc	Final Conc	Accuracy
Blood: 1_5 ng/mL	1	<input checked="" type="checkbox"/>	1	1.2	119.0
Blood: 2_10 ng/mL	2	<input checked="" type="checkbox"/>	2	1.9	94.6
Blood: 5_25 ng/mL	3	<input checked="" type="checkbox"/>	5	4.5	90.9
Blood: 10_50 ng/mL	4	<input checked="" type="checkbox"/>	10	9.1	91.4
Blood: 25_125 ng/mL	5	<input checked="" type="checkbox"/>	25	25.8	103.2
Blood: 50_250 ng/mL	6	<input checked="" type="checkbox"/>	50	50.4	100.9

ISP FORENSICS
Pocatello
Cannabinoid Analysis Report

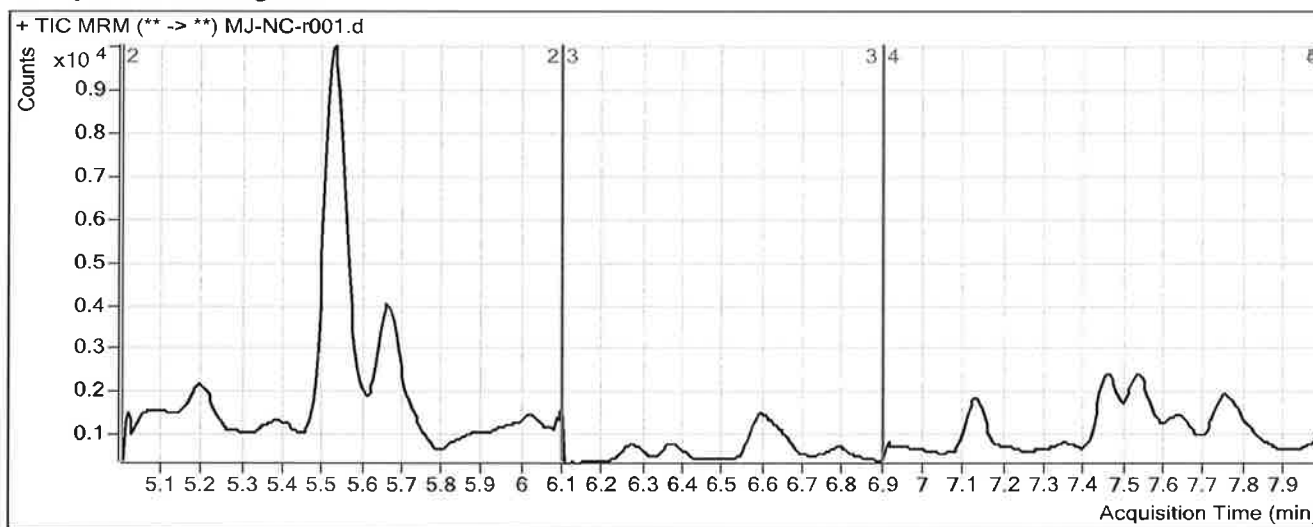
D

Batch Data Path C:\MassHunter\Data\2017\Combined\111617 SP CS Benz and Cann Reinjects\QuantResults\111617 CANN SP.I
Analysis Time 11/17/2017 9:54 AM **Analyst Name** ISPUser
Report Time 11/17/2017 9:58 AM **Reporter Name** ISPUser
Last Calib Update 11/17/2017 9:54 AM **Batch State** Processed

Analysis Info

Acq Time 2017-11-17 04:57 **Data File** MJ-NC-r001.d
Sample Type Sample **Sample Name** Blood Negative Control
Dilution 1 **Acq Method** isp blood cannabinoids Poky 2016-3.m
Position P2-A9 **Sample Info** Hemostate Negative Sheep Blood LOT 361331-3
Inj Vol -1 **Comment** AM 14 Cannabinoids by LCQQQ

Sample Chromatogram



Results

Compound	ISTD Compound	RT	Response	ISTD Resp	Resp Ratio	Final Conc
OH-THC	OH-THC-d3	5.482	261	31243	0.0083	0.5465

ISP FORENSICS
Pocatello
Cannabinoid Analysis Report

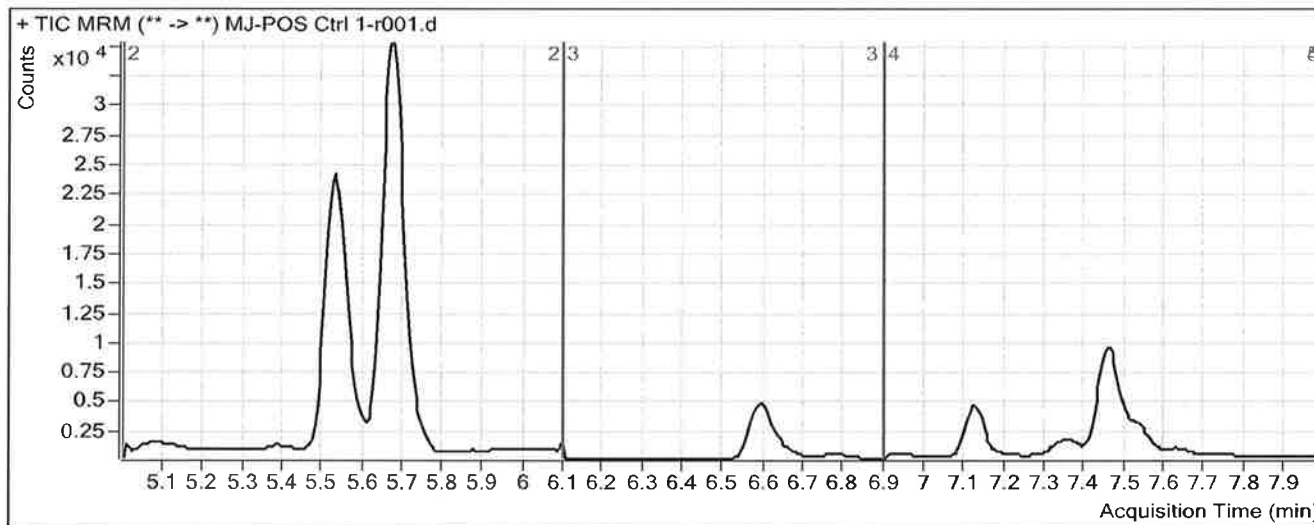
A

Batch Data Path	C:\MassHunter\Data\2017\Combined\111617 SP CS Benz and Cann Reinjects\QuantResults\111617 CANN SP.t		
Analysis Time	11/17/2017 9:54 AM	Analyst Name	ISPUser
Report Time	11/17/2017 9:58 AM	Reporter Name	ISPUser
Last Calib Update	11/17/2017 9:54 AM	Batch State	Processed

Analysis Info

Acq Time	2017-11-17 05:10	Data File	MJ-POS Ctrl 1-r001.d
Sample Type	Sample	Sample Name	PC1
Dilution	1	Acq Method	isp blood cannabinoids Poky 2016-3.m
Position	P2-B1	Sample Info	Hemostate Sheep Blood LOT 361331-3 + WS050917
Inj Vol	-1	Comment	AM 14 Cannabinoids by LCQQQ

Sample Chromatogram



Results

Compound	ISTD Compound	RT	Response	ISTD Resp	Resp Ratio	Final Conc
OH-THC	OH-THC-d3	5.432	969	79290	0.0122	0.5858
THC-COOH	THC-COOH-d3	5.676	16791	11835	1.4187	44.9182
THC	THC-d3	7.457	6477	9439	0.6863	6.8199

ISP FORENSICS
Pocatello
Cannabinoid Analysis Report

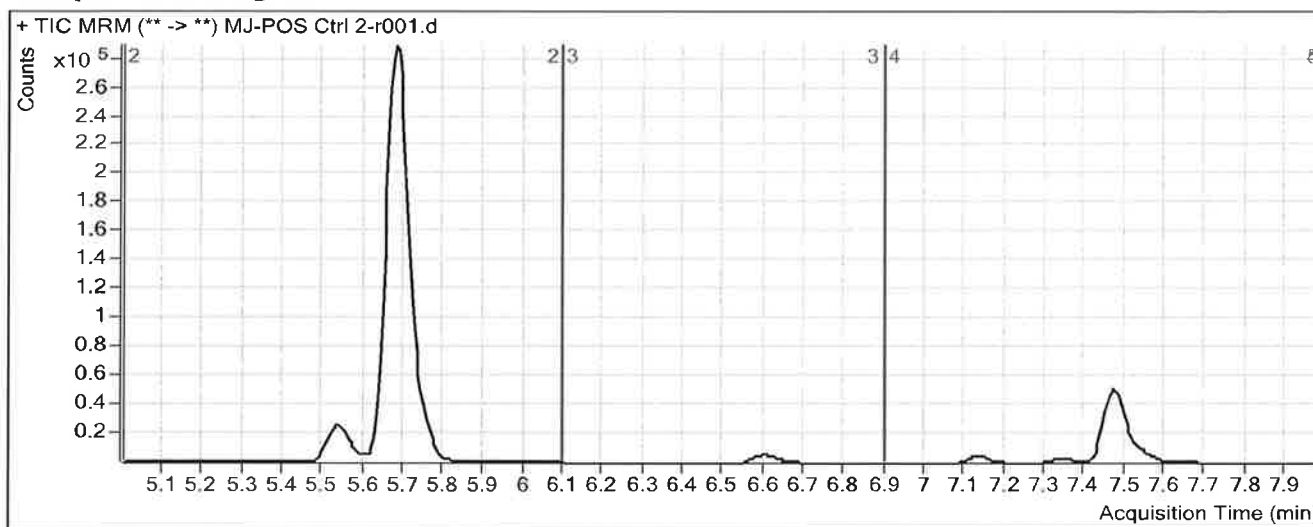
D

Batch Data Path C:\MassHunter\Data\2017\Combined\111617 SP CS Benz and Cann Reinjects\QuantResults\111617 CANN SP.I
Analysis Time 11/17/2017 9:54 AM **Analyst Name** ISPUser
Report Time 11/17/2017 9:58 AM **Reporter Name** ISPUser
Last Calib Update 11/17/2017 9:54 AM **Batch State** Processed

Analysis Info

Acq Time 2017-11-17 06:57 **Data File** MJ-POS Ctrl 2-r001.d
Sample Type Sample **Sample Name** PC2
Dilution 1 **Acq Method** isp blood cannabinoids Poky 2016-3.m
Position P2-B8 **Sample Info** Hemostate Sheep Blood LOT 361331-3 + WS050917
Inj Vol -1 **Comment** AM 14 Cannabinoids by LCQQQ

Sample Chromatogram



Results

Compound	ISTD Compound	RT	Response	ISTD Resp	Resp Ratio	Final Conc
THC-COOH	THC-COOH-d3	5.681	182038	12697	14.3373	437.4628
THC	THC-d3	7.468	71935	9306	7.7299	71.1033